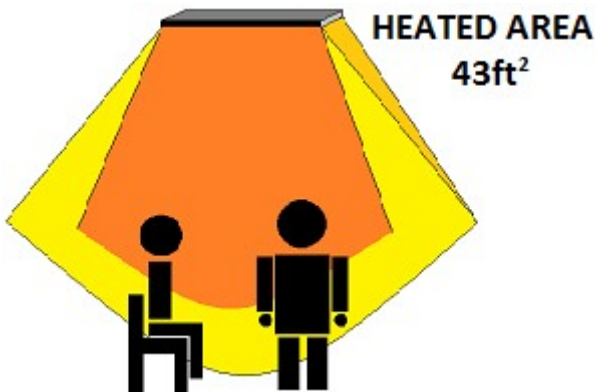
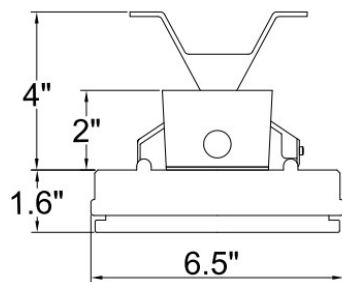


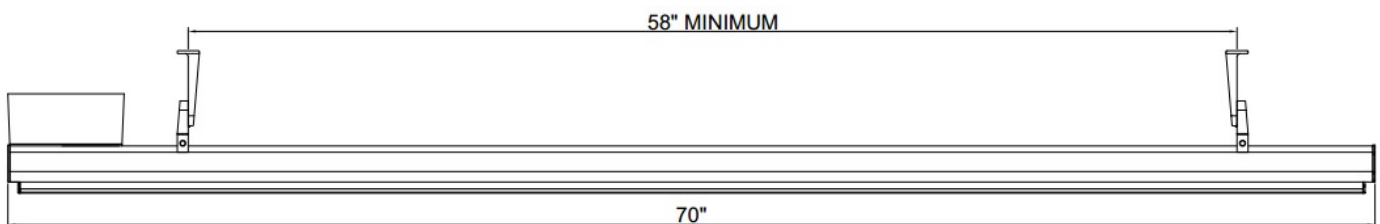
SPECIFICATION SHEET



HEATED AREA	
INDOOR PROTECTED	86 ft ² (6m ²)
OUTDOOR ENCLOSED	69 ft ² (4.8m ²)
OUTDOOR EXPOSED	57 ft ² (4m ²)



END VIEW



PART NAME: **HEATSTRIP LARGE**

DESCRIPTION: High intensity electric radiant heater

PART No: THH3200AUL

POWER: 3200 Watts (11000BTU)

VOLTAGE: 240 volts @ 50 - 60Hz

CURRENT: 13 Amps

DIMENSIONS: 70 x 6.5 x 2"

WEIGHT: 22 lbs

CONNECTION: Gangbox

APPROVALS: CSA/UL E321448

PROTECTION RATING: IP55 From water ingress from all directions

MOUNTING OPTIONS: Suitable for ceiling, wall, beam, fixed umbrella and recess mounting. Also available with drop down poles or suspension kit.

MOUNTING HEIGHT:

MINIMUM 82" (2.1m)

OPTIMUM 90 to 105"

MAXIMUM 117" (3.0m) Use drop down kit or suspension kit if higher

Note: See the Product Manual for more detail

Heatstrip USA LLC.

1-877-222-0063 (Toll Free)

www.heatstripusa.com

info@heatstripusa.com

PMB 532,

415 Laurel St,

San Diego, CA 92101

616 Corporate Way,

Suite 2-5771,

Valley Cottage, NY 10989

